

# CRESCENT LAKE DISTRICT

---

**June 8, 2026**

To: **All Crescent Lake Property Owners**  
From: **Crescent Lake District Commissioners**

Re: **Summer 2026 Update**

Dear Property Owners,

The Lake District commissioners hope you are enjoying Crescent Lake this 2026 summer season and are looking forward to the upcoming 4<sup>th</sup> of July Lake celebrations.

## Eurasian Water Milfoil Update

Our fall 2025 lake survey found that EWM is generally under control which was great news. Our 2025 north end (boat landing area) treatment was very effective. However, the survey did find growth was increasing in the south end of the lake, commonly known as Radke Bay. Based on those findings, we applied to the DNR for a 2026 spring permit to treat 22 acres with ProcettaCOR herbicide to help prevent further growth and spread of EWM. Unfortunately, as the DNR has often done in the past, the DNR denied the permit. Why? In their opinion the EWM had not reached the density required for treatment. It's a frustrating cycle we find ourselves in with the DNR. Their logic is not to treat a small area when it's manageable and cost effective, but rather to wait until we have a dense and widespread problem. Unfortunately this requires a much larger chemical treatment at a significantly higher cost to treat. I find this decision incomprehensible and not respectful of our mission and your tax dollars.

As a result, our next step has been to apply for a diver assisted hand harvest permit (DASH) which we hope to receive. This is an expensive and less effective method of EWM control with disputed results. The commissioners decided to proceed with 3-5 days at a cost of approximately \$2600 per day vs do nothing. We have also contracted for a spring survey to help provide precise EWM plant locations to assist the scuba divers when hand harvesting.

## What can you do?

We ask you to recognize the risk of spreading EWM by avoiding close-to-shore boating as you enjoy your pontoon, fish or ski boats. Just one boat pass can set loose several pieces of EWM that will float away and eventually take root in another part of the lake.

## Clean Boats Clean Water Boat Landing Inspections

We continue to need additional boat landing inspection volunteers. We have been unable to locate a CBCW coordinator for the summer, but we are asking each household to volunteer one shift per summer. With that we

P.O. Box 57, Rhinelander, WI 54501

---

[www.crescentlakedistrict.com](http://www.crescentlakedistrict.com)

could easily cover our landing needs. Our website [www.crescentlakedistrict.org](http://www.crescentlakedistrict.org) has a calendar signup you can use, or reach out to fellow commissioner Dave Schwanz to volunteer or if you have other questions. Just one shift from every household please. Weekends and weekday evenings are most effective at preventing several new invasives from reaching our lake.

### Enhanced Wake Surfing

You may have read about the recent failed effort in the Wisconsin legislature to pass a statewide regulation. It is unfortunate that a reasonable compromise for safe use cannot be reached. That leaves Crescent Lake and our shoreline vulnerable to damage from enhanced wake surfing in many parts of our lake. The University of Minnesota research on this topic recommends keeping 500 feet from shore distance and a 20-foot minimum water depth to avoid lake and shore damage when surfing. We ask you to observe these recommendations and recognize the damage that can occur if not followed. See the attached map for areas of adequate depth and shoreline distance.

### Future CLD plans

We will continue to have dialog with the DNR, tribal representatives, our lake survey and treatment providers, and other lake groups on EWM control. We remain hopeful for a positive DNR response to our future permit applications when chemical treatment is needed. When permit requests are denied, we will utilize our funds to hire contractors with paid divers to hand pull EWM where we can identify it. **This is a costly and imperfect solution** but is the only course of action left at our disposal versus just allowing the unmitigated EWM spread. Past history has shown that permit denials by the DNR will eventually lead to greater EWM spread and the need for a far larger acreage or more costly **whole shoreline treatment**, wasting the previous efforts and **taxpayer money** spent to keep the EWM under control. It's an ongoing battle with the DNR as well as EWM.

Please watch our website ([www.crescentlakedistrict.com](http://www.crescentlakedistrict.com)) for updates on our lake. Also please plan to attend our CLD annual meeting at 9 am on September 5<sup>th</sup> at the Crescent town hall where these matters and 2027 budgeting take place.

Last, please thank Terry Goldbach and our EWM response team. Without their efforts and those of many others, Crescent Lake would be in a much worse EWM condition than we find the lake today.

On behalf of the volunteer commissioners, thank you for your cooperation, support, understanding, and volunteerism.

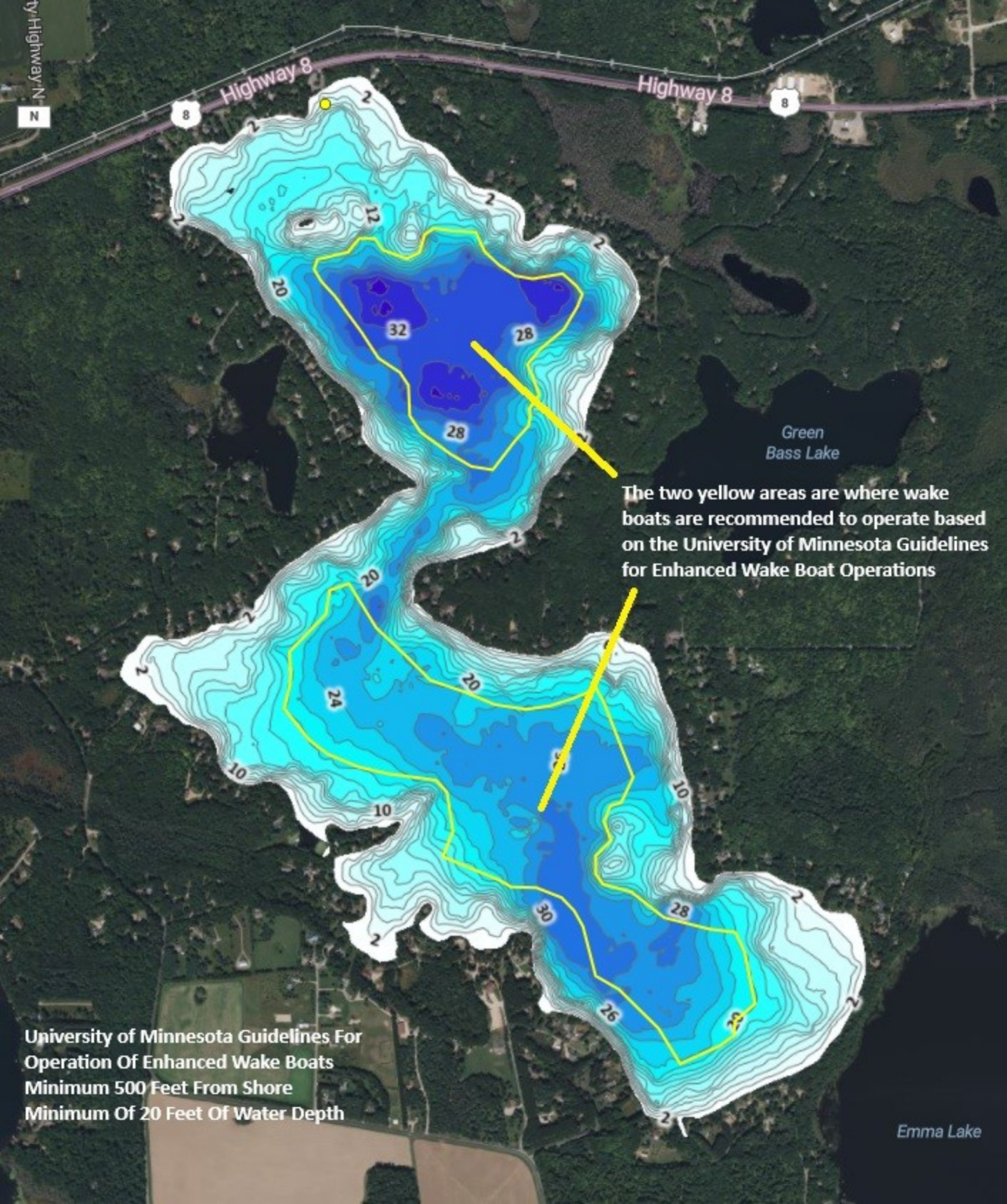
Tim Kilgore – Crescent Lake District Chairman

Attachment – Crescent Lake Map

P.O. Box 57, Rhinelander, WI 54501

---

[www.crescentlakedistrict.com](http://www.crescentlakedistrict.com)



University of Minnesota Guidelines For  
Operation Of Enhanced Wake Boats  
Minimum 500 Feet From Shore  
Minimum Of 20 Feet Of Water Depth

The two yellow areas are where wake  
boats are recommended to operate  
based on the University of Minnesota  
Guidelines for Enhanced Wake Boat  
Operations

Emma Lake